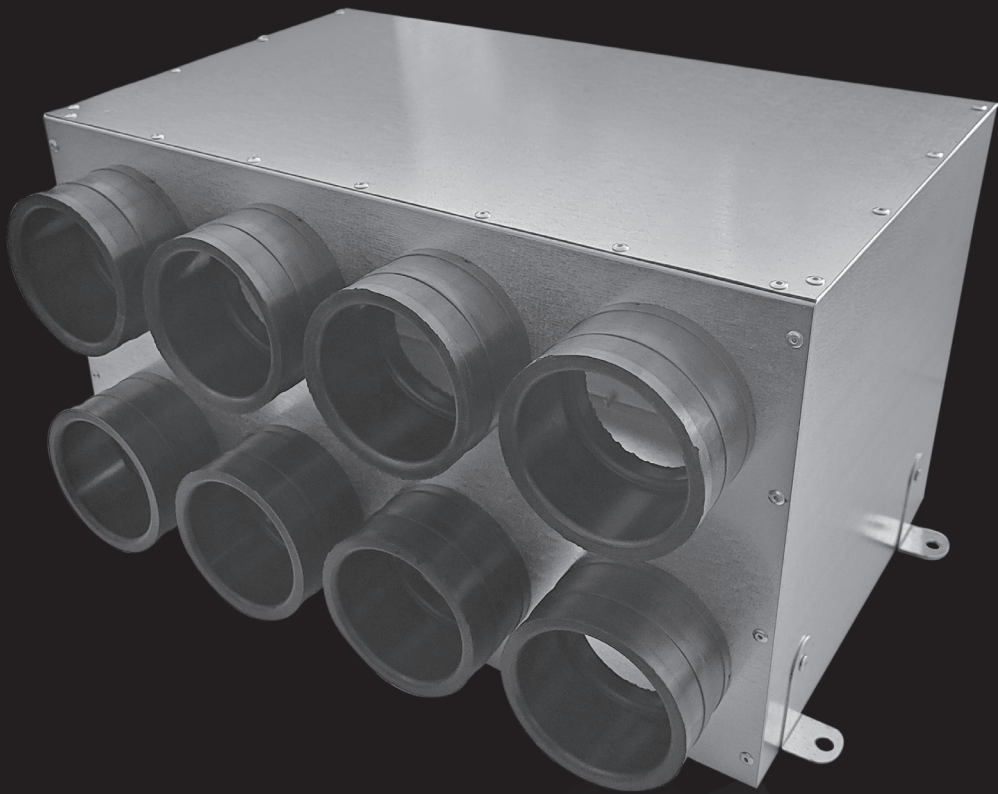


Integrated residential
ventilation system



**>DIRECT
VENT**

ROD-VENT-VA

Flexible double-layer pipe



Material:

- HDPE;
- the inner layer is made of zinc compounds with unique antibacterial and antifungal properties.

What is a Direct Vent residential ventilation system?

These are flexible ventilation ducts, plenum boxes and additional elements enabling the construction of any exhaust or supply-exhaust ventilation system with heat recovery.

The system allows you to conveniently and quickly install a mechanical ventilation system, which can be easily hidden in floors or under suspended ceilings.

Product characteristics:

- by introducing a layer of macromolecular plastic into the pipe structure, it was possible to drastically increase the smoothness of the inner wall, meaning that the tendency for the accumulation of impurities as well as condensed moisture inside the grooves was minimised;
- the smoother inner layer ensures a much freer airflow, as it does not create resistance and, therefore, noise;
- improved mechanical properties of pipes, which have a greater resistance to static loads, increased flexibility;
- the use of suitable stabilisers at the manufacturing stage has improved the ageing resistance of the pipes, i.e. the material properties do not change over time;
- an option to choose an appropriate duct diameter, ensuring adequate flow capacity and, at the same time, adjusting its size to enable it to be installed in the ceiling or wall;
- suitable design for flexibility and strength;
- properties: antibacterial, antistatic and antifungal.

Type	Diameter [mm]	Length [m]	Number of layers	Compression resistance [N]
ROD-VENT-VA-75	75	50	2	450
ROD-VENT-VA-90	90	50	2	450

MRW

Pipe connector



- connection of a manifold pipe;
- cleverly designed to keep the system tight where we need to connect the two ends of the pipe.

Type	Diameter [mm]	Material
MRW 75	75	EPDM

MPR

Duct clamp



- allows the attachment of a flexible duct to the wall or ceiling;
- max. 8 ducts (can be disconnected in any way).

Type	Diameter [mm]	Material
MPR 75	75	galvanized steel
MPR 90	90	

SOSR

Bypass box

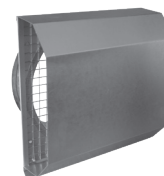


- system bypass, designed to enable manifold pipes to be crossed without altering installation height;
- quick and easy fitting of the duct with connectors without the need for additional seals.

Type	Diameter [mm]	Material
SOSR 75	75	galvanized steel / EPDM

CWKLR

Angled air intake / exhaust with gasket



- used as the termination of the forced ventilation system on the air intake and exhaust side;
- the trapezoidal front design protects the system from dragging rain or snow into the system;
- the galvanised grid further prevents birds and coarser impurities from entering the system;
- fitted with a drip cap to prevent water leaking down the elevation of the building;
- a gasket at the joint guarantees a tight connection to the ventilation system;
- mounting holes allow the air intake/exhauster to be permanently connected to the building structure

Type	Diameter [mm]	Material
CWKLR 160	160	galvanized steel
CWKLR 200	200	
CWKLR 250	250	
CWKLR 315	315	

OW

Vaseline oil



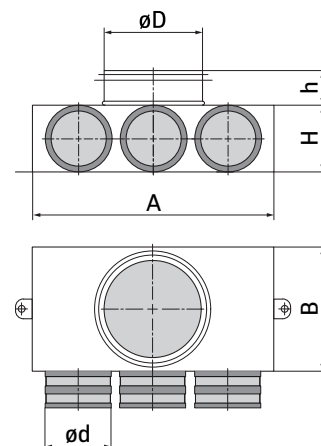
- reduces friction and squeaks;
- preserves rubber and plastic parts;
- displaces water and facilitates slippage;
- perfect for precision mechanisms.

Type	Density [g/cm³]	Package [ml]
OW 200	0,852	500

SR-T Plenum box

Product characteristics:

- clever design of the internal components to minimise air resistance;
- 20 mm wide swivel mounting brackets, which can be fixed on 2 sides of the box;
- EPDM rubber connectors;
- quick and easy fitting of the duct with connectors without the need for additional seals;
- 45 mm coupling with seal;
- sheet metal connection via rivets.



Material:

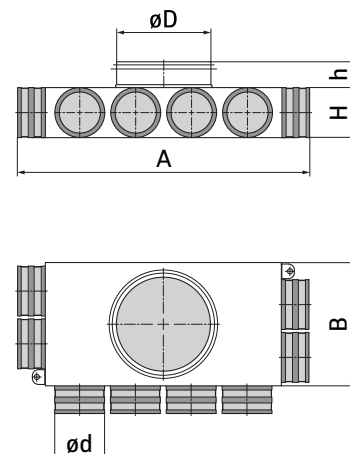
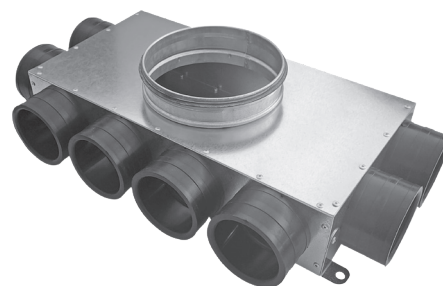
- galvanized steel;
- EPDM rubber connectors;
- rubber gasket;
- mounting brackets made of steel.

Type	Number of connectors	ϕD [mm]	ϕd [mm]	A [mm]	B [mm]	H [mm]	h [mm]
SR-T175/125	1	125	75	160	160	85	45
SR-T2 75/125	2	125	75	210	160	85	45
SR-T3 75/125	3	125	75	305	160	85	45

SR-RKJ Single-row plenum box

Product characteristics:

- clever design of the internal components to minimise air resistance;
- 45 mm long connection fitted with a gasket;
- sheet metal connection via rivets;
- quick and easy fitting of the duct with connectors without the need for additional seals;
- EPDM rubber connectors;
- 20 mm wide swivel mounting brackets.



Material:

- galvanized steel;
- EPDM rubber connectors;
- rubber gasket;
- mounting brackets made of steel.

Type	Number of connectors	ϕD [mm]	ϕd [mm]	A [mm]	B [mm]	H [mm]	h [mm]
SR-RKJ8 75/160	8 (2-4-2)	160	75	400	210	85	45
SR-RKJ10 75/200	10 (2-6-2)	200	75	590	240	85	45
SR-RKJ12 75/200	12 (3-6-3)	200	75	590	307	85	45

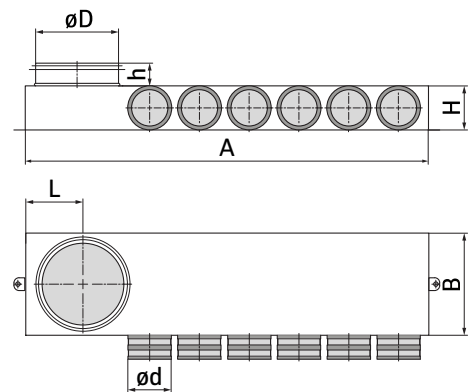
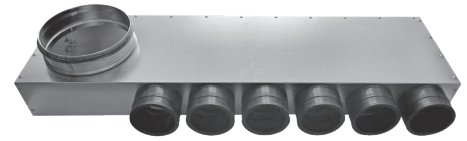
Product characteristics:

- clever design of the internal components to minimise air resistance;
- 45 mm long connection fitted with a gasket;
- sheet metal connection via rivets;
- quick and easy fitting of the duct with connectors without the need for additional seals;
- EPDM rubber connectors;
- 20 mm wide swivel mounting brackets, which can be fixed on 2 sides of the box;
- left-sided (**SR-RKN.L**) or right-sided (**SR-RKN.P**) version.

Material:

- galvanized steel;
- EPDM rubber connectors;
- rubber gasket;
- mounting brackets made of steel.

Type	Number of connectors	øD [mm]	ød [mm]	A [mm]	B [mm]	H [mm]	h [mm]	L [mm]
SR-RKN6 75/160	6	160	75	768	200	85	45	100
SR-RKN8 75/160	8	160	75	958	200	85	45	100
SR-RKN10 75/160	10	160	75	1148	200	85	45	100



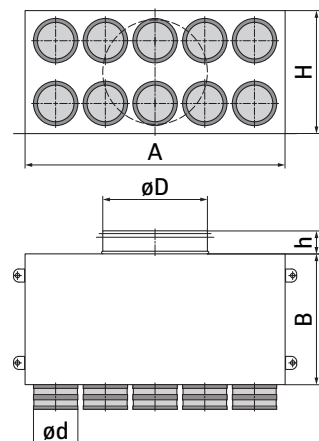
Product characteristics:

- 45 mm long connection fitted with a gasket;
- sheet metal connection via rivets;
- quick and easy fitting of the duct with connectors without the need for additional seals;
- EPDM rubber connectors;
- 20 mm wide swivel mounting brackets, which can be fixed on 2 sides of the box.

Material:

- galvanized steel;
- EPDM rubber connectors;
- rubber gasket;
- mounting brackets made of steel.

Type	Number of connectors	øD [mm]	ød [mm]	A [mm]	B [mm]	H [mm]	h [mm]
SR-RPD8 75/160	8 (2×4)	160	75	400	250	235	45
SR-RPD10 75/200	10 (2×5)	200	75	495	250	235	45
SR-RPD12 75/200	12 (2×6)	200	75	590	250	235	45





sales@directvent.eu
www.directvent.eu